

# APPROVED SHEET

CUSTOMER: 快特

P/N:

KM P/N: KM24SG082 G

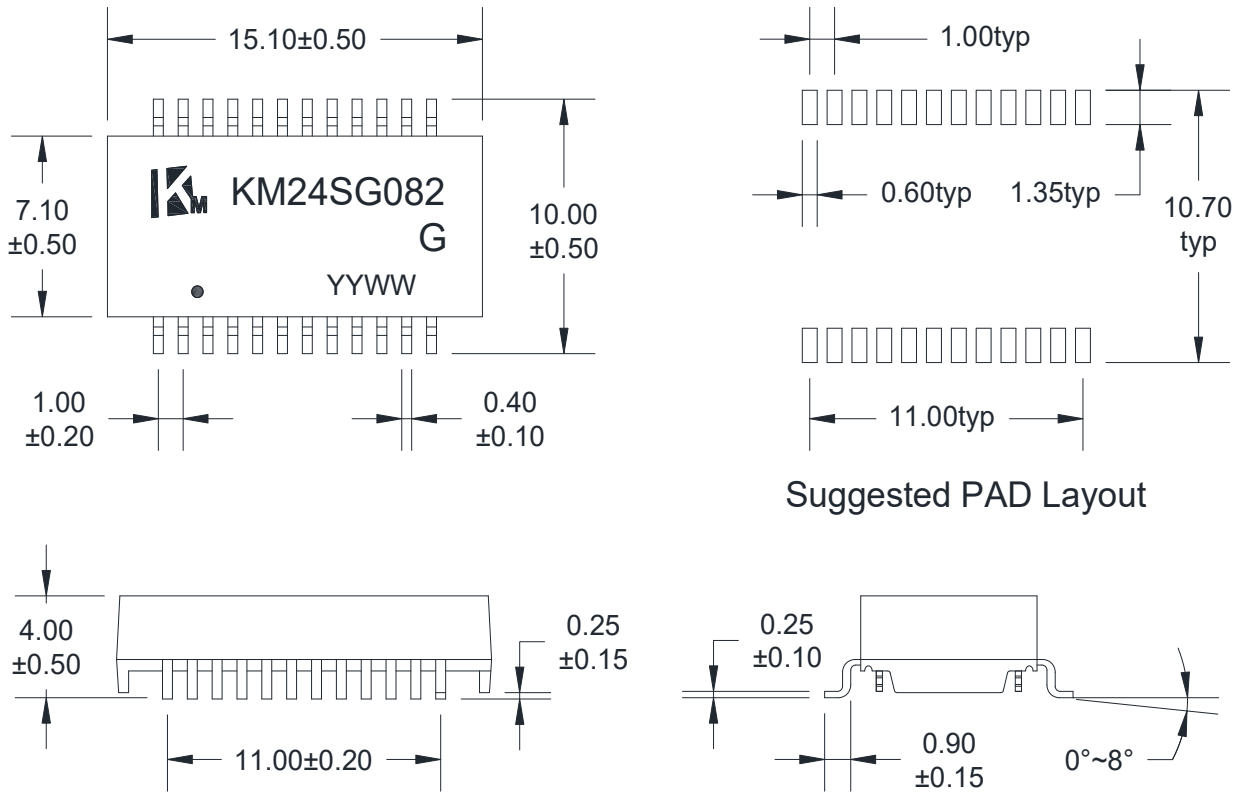
REV: R0

DESCRIPTION: 2.5G BASE-T

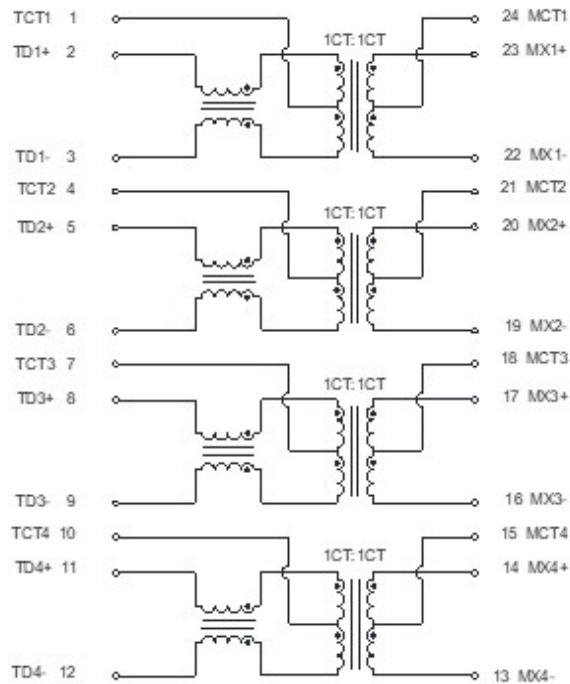
CUSTOMER APPROVAL		COMPANY APPROVAL	
INSPECTED BY:		ISSUED BY:	蒋利敏
CHECKED BY:		CHECKED BY:	
APPROVED BY:		APPROVED BY:	
APPROVED DATE:		ISSUED DATE:	2020/9/22

Please Return One Copy to Us After Approved,TKS! (承认后请回寄一份,谢谢)

## A. MECHANICAL(unit:mm)



## B. SCHEMATICS



DESCRIPTION	KM P/N	SPEC NO.	REV: R0
2.5G BASE-T	KM24SG082 G		PAGE: 1/3

## C. ELECTRICAL SPECIFICATIONS @25°C

1. OCL: 160uH Min @ 100 KHz, 0.1V ,8mA DC Bias
2. Leakage Inductance: 0.35uH Max @ 100KHz, 0.1V
3. DCR: 1.0Ω Max
4. Turns Ratio: 1CT:1CT±5%
5. Insertion Loss: -0.5 dB Max @ 1-50 MHz  
-1.0 dB Max @ 50-125 MHz  
-2.0 dB Max @ 125-250 MHz
6. Return Loss: -20dB Min @  $1 \leq f \leq 40$  MHz  
-16+10\*log(f/40) dB Min @  $40 \leq f \leq 250$ MHz
7. Cross Talk: -30 dB Min @ 1-150MHz
8. Common Mode Rejection: -30 dB Min @ 1-150 MHz
9. Isolation Hipot: 1500VAC 1mA 60s
10. Operating temperature 0°C to +70°C
11. Storage temperature -25°C to +125°C

DESCRIPTION

KM P/N

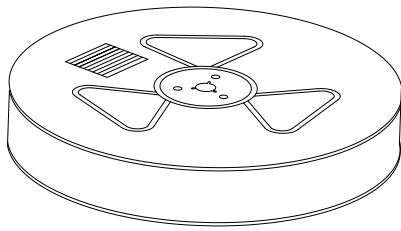
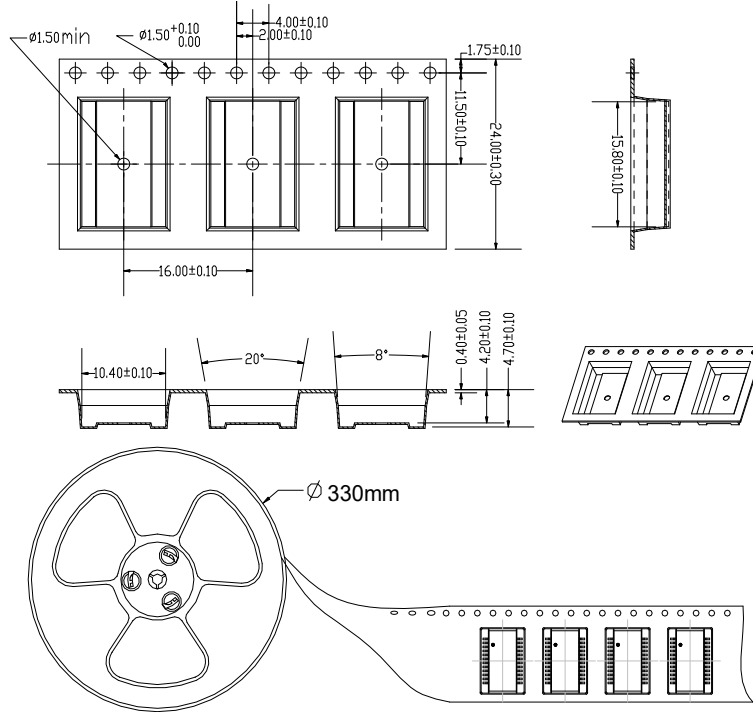
SPEC NO.

REV: R0

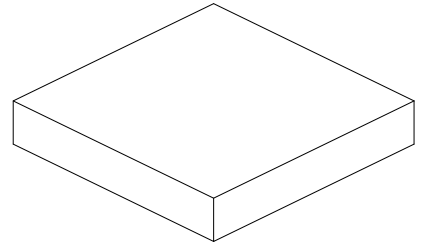


Kingmag Corporation ., Ltd .

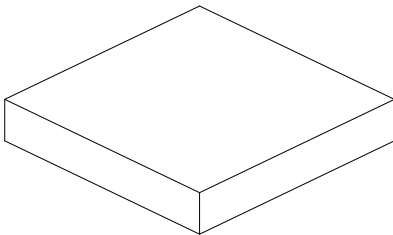
D. PACKAGE INFORMATION



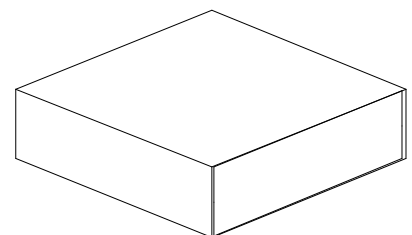
three reel



Inner Carton



two Inner Carton



Export Carton

Package Quantity:

One Reel=800Pcs

One Inner Carton=800\*3=2400Pcs

One Export Carton=2400\*2=4800Pcs

DESCRIPTION	KM P/N	SPEC NO.	REV: R0
2.5G BASE-T	KM24SG082 G		PAGE: 3/3