



快特電子股份有限公司

Quictron Corporation

115 台北市區南港區成功路一段32號4樓之10

Rm. 10, 4F., No.32, Sec. 1, Chenggong Rd., Nangang Dist., Taipei City 115, Taiwan, R.O.C

Tel : +886-2-2788-6849 Fax : +886-2-2788-7949

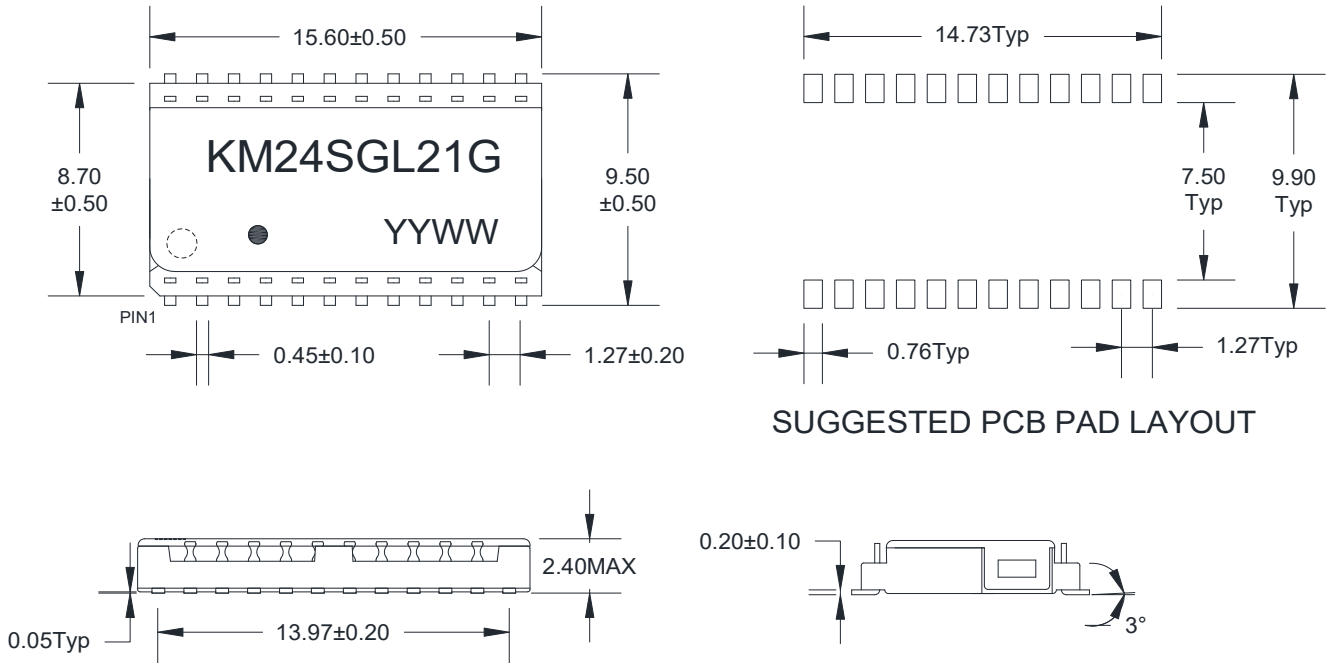
APPROVAL SHEET

| | |
|---------------------------------------|---|
| Customer 客 戶 | |
| Description 零 件 概 述 | 24 PIN, 2.5G BASE-T LAN Transformer, KM24SGL21 G |
| Customer's Part No. 客 戶 料 號 | |
| Vendor's Part No. 供 應 商 料 號 | KM24SGL21 G |

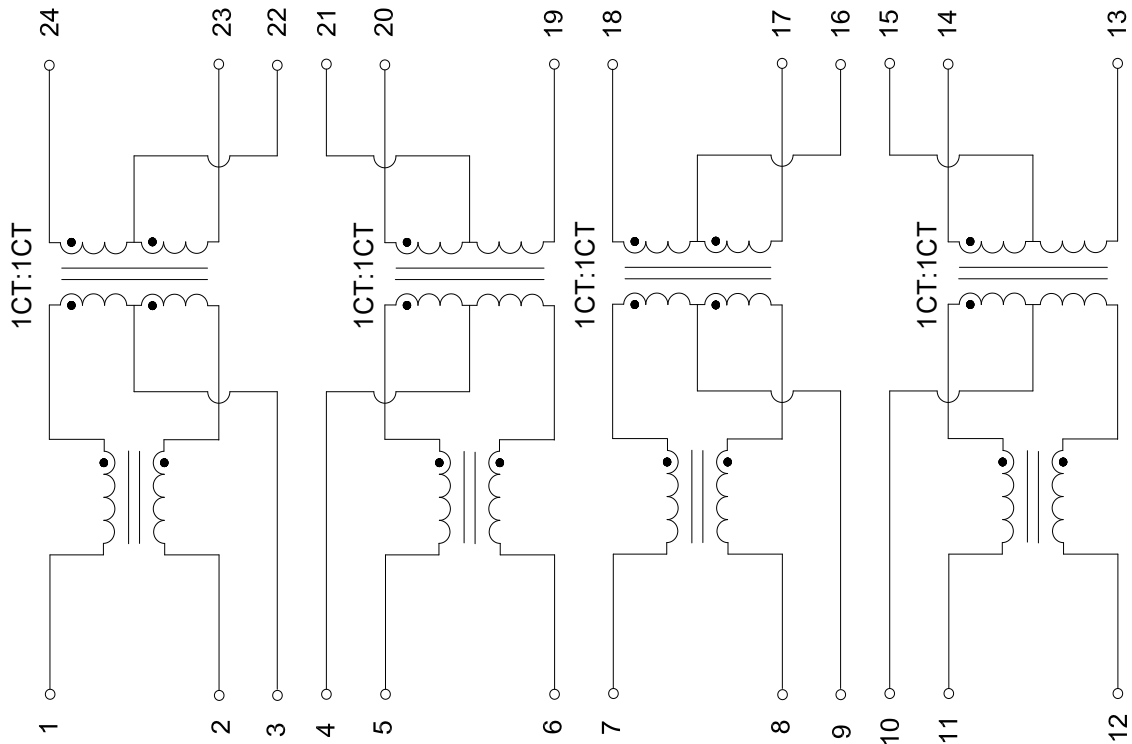
| | |
|--------------------|--------------------|
| SUPPLIED BY | APPROVED BY |
| 蔣利敏 | 黃永華 Johnny Huang |



A. MECHANICAL(unit:mm)



B. SCHEMATICS



| DESCRIPTION | KM P/N | SPEC NO | REV: R0 |
|-------------|-------------|---------|-----------|
| 2.5G BASE-T | KM24SGL21 G | | PAGE: 2/4 |



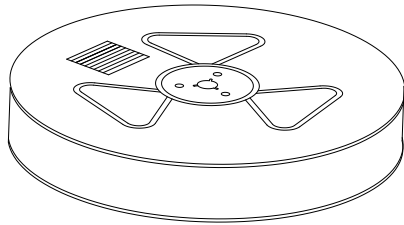
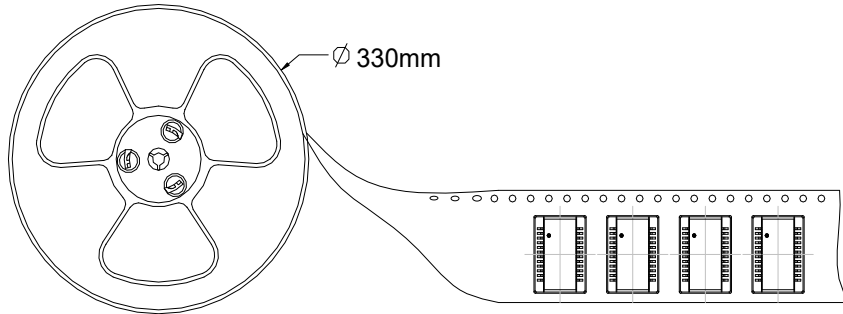
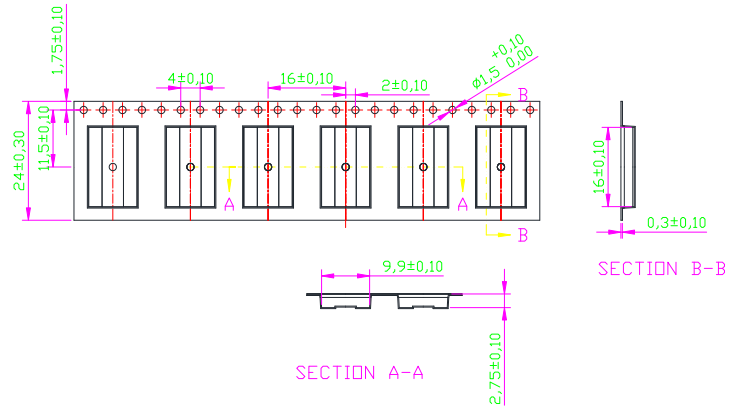
C. ELECTRICAL SPECIFICATIONS @25°C

1. OCL: 250uH Min @ 100 KHz, 0.1V
2. Leakage Inductance: 0.5uH Max @ 100KHz, 0.1V
3. DCR: 1400mΩ Max
4. Turns Ratio: 1CT:1CT±5%
5. Insertion Loss: -1.0 dB Max @ 1-125 MHz
6. Return Loss: -16 dB Min @ 1-40 MHz
 - 14.4 dB Min @ 40-60 MHz
 - 13.4 dB Min @ 60-80 MHz
 - 13 dB Min @ 80-100 MHz
 - 12 dB Min @ 100-125 MHz
7. Cross Talk: -30 dB Min @ 1-100 MHz
8. Common Mode Rejection: -30 dB Min @ 1-125 MHz
9. Isolation Hipot: 1500VAC 1mA 60S
10. Operating temperature 0°C to +70°C
11. Storage temperature -20°C to +125°C
- 12.MSL:Grade: 1 Level. Floor life: 1year Condition:$\leq 30^{\circ}\text{C}/60\%\text{RH}$

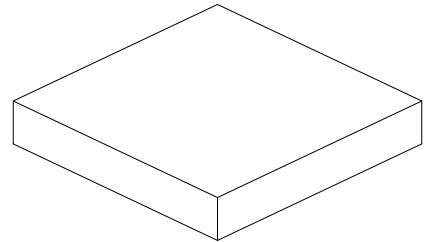
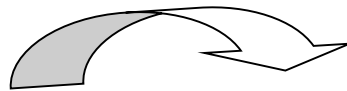
| DESCRIPTION | KM P/N | SPEC NO | REV: R0 |
|-------------|-------------|---------|-----------|
| 2.5G BASE-T | KM24SGL21 G | | PAGE: 3/4 |



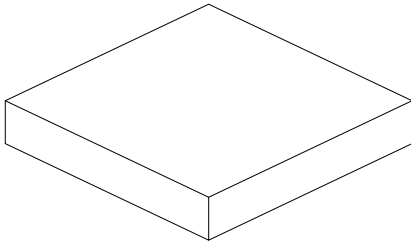
D. PACKAGE INFORMATION



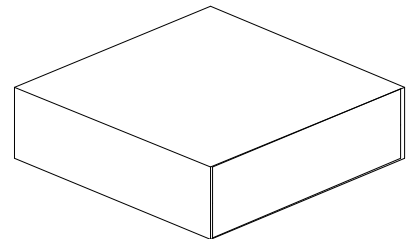
Three Reel



Inner Carton



Two Inner Carton



Export Carton

Package Quantity:

One Reel=1500Pcs

One Inner Carton=1500*3=4500Pcs

One Export Carton=4500*2=9000Pcs

| DESCRIPTION | KM P/N | SPEC NO | REV: R0 |
|-------------|-------------|---------|-----------|
| 2.5G BASE-T | KM24SGL21 G | | PAGE: 4/4 |