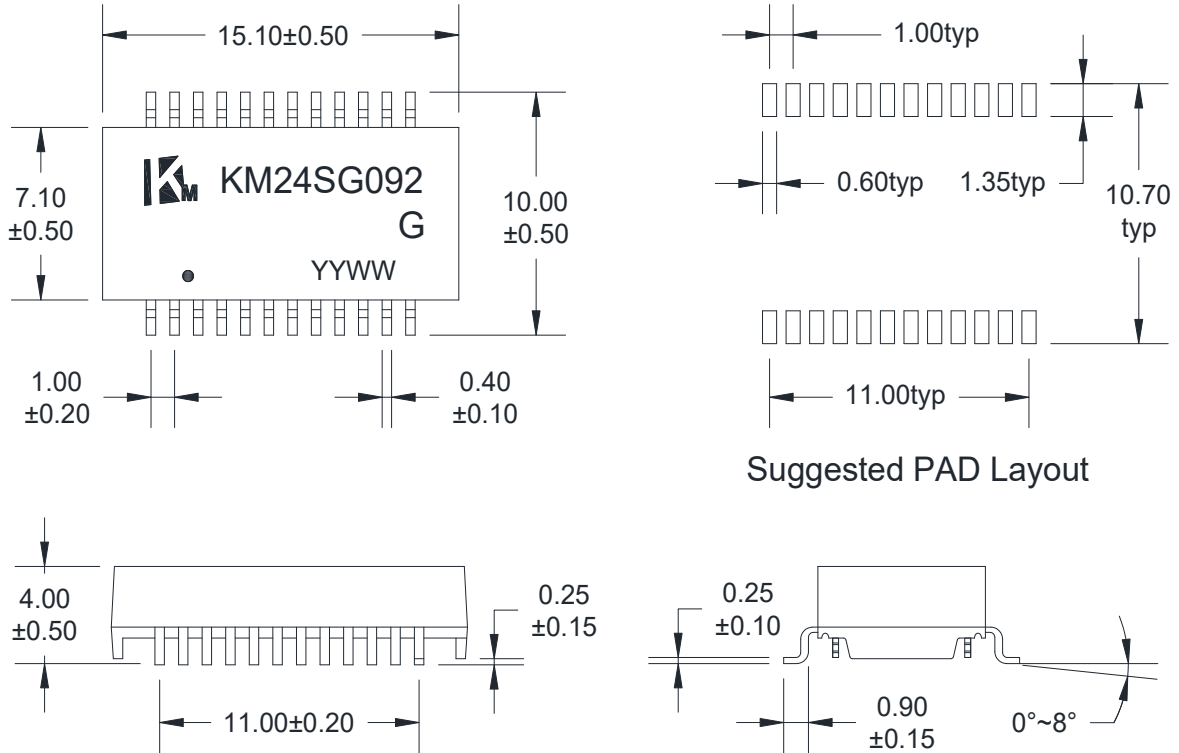
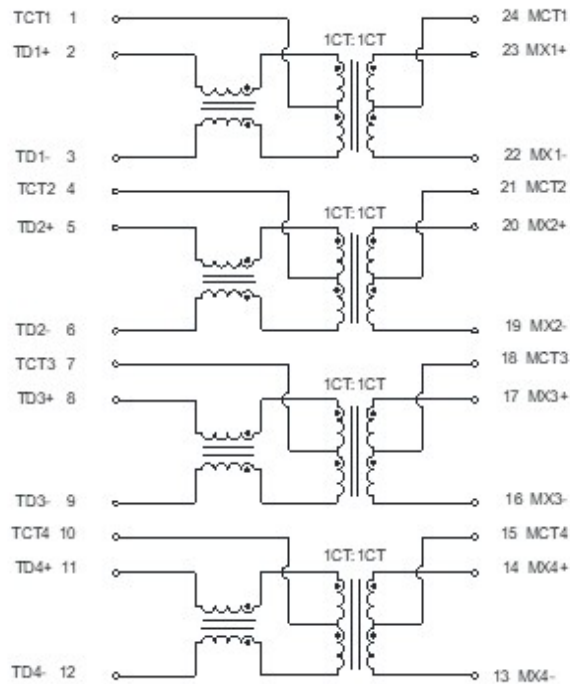


A. MECHANICAL(unit:mm)



B. SCHEMATICS



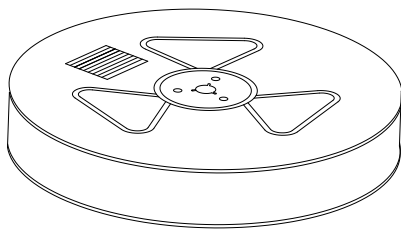
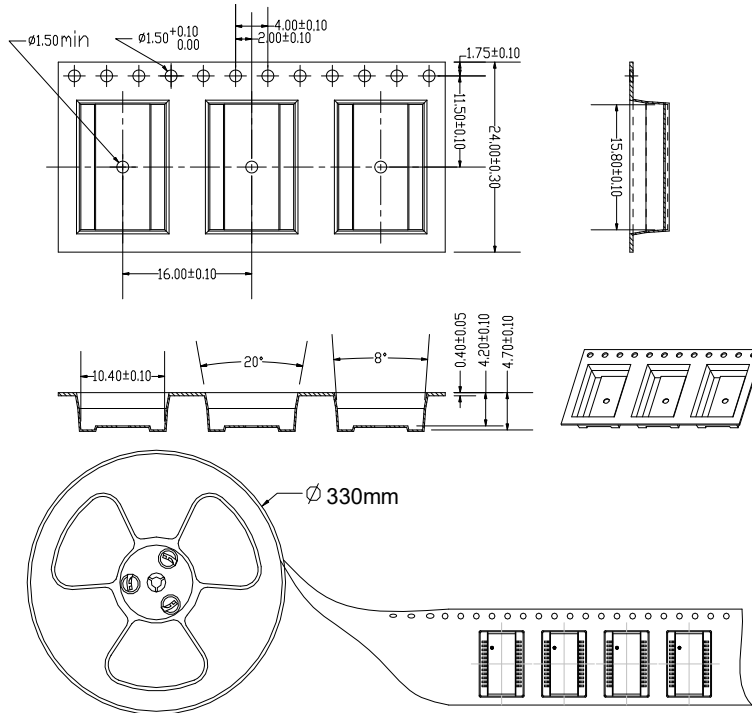
DESCRIPTION	KM P/N	SPEC NO.	REV: R0
5G BASE-T	KM24SG092 G		PAGE: 1/3

C. ELECTRICAL SPECIFICATIONS @25°C

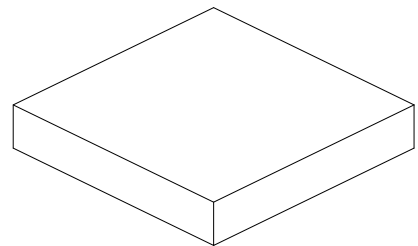
1. OCL: 160uH Min @ 100 KHz, 0.1V ,8mA DC Bias
2. Leakage Inductance: 0.5uH Max @ 100KHz, 0.1V
3. DCR: 1.0Ω Max
4. Turns Ratio: 1CT:1CT±5%
5. Insertion Loss: -1 dB Max @ 1-100 MHz
-2.0 dB Max @ 100-250 MHz
6. Return Loss: -16dB Min @ $1 \leq f \leq 40$ MHz
-16+10log(f/40) dB Min @ $40 \leq f \leq 250$ MHz ,where f is in MHz
7. Cross Talk: -30 dB Min @ 1-250MHz
8. Common Mode Rejection: -30 dB Min @ 1-250 MHz
9. Isolation Hipot: 1500VAC 1mA 60s
10. Operating temperature 0°C to +70°C
11. Storage temperature -25°C to +125°C
12. MSL: Grade: 1Level. Floor life: 1year Condition: $\leq 30^{\circ}\text{C}/60\%\text{RH}$

DESCRIPTION	KM P/N	SPEC NO.	REV: R0
5G BASE-T	KM24SG092 G		PAGE: 2/3

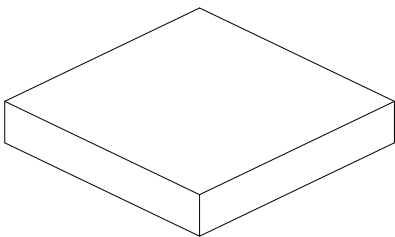
D. PACKAGE INFORMATION



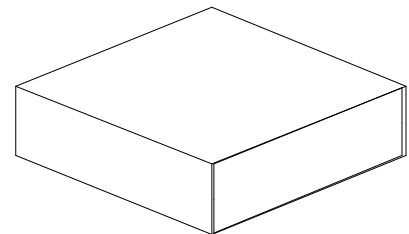
three reel



Inner Carton



two Inner Carton



Export Carton

Package Quantity:

One Reel=800Pcs

One Inner Carton=800*3=2400Pcs

One Export Carton=2400*2=4800Pcs

DESCRIPTION	KM P/N	SPEC NO.	REV: R0
5G BASE-T	KM24SG092 G		PAGE: 3/3